

PNEUMATIC ROLLERS

ART & AP SERIES

EU Stage IIIA / U.S. EPA Tier 3

EU Stage IV / U.S. EPA Tier 4f



AMMANN

YOUR BENEFITS AT A GLANCE

WHAT CHARACTERISES THE PNEUMATIC ROLLERS FROM AMMANN?



ART 280

Operating weight: 9750 kg (21,500 lb)
*9700 kg (*21,380 lb)
Maximum weight: 28 000 kg (61,730 lb)
Working width: 2040 mm (80.3 in)
Engine: Deutz TCD3.6 – 100 kW (134 HP)
EU Stage IV / U.S. EPA Tier 4f
*EU Stage IIIA / U.S. EPA Tier 3



ART 240

Operating weight: 9700 kg (21,380 lb)
Maximum weight: 24 000 kg (52,910 lb)
Working width: 1986 mm (78.2 in)
Engine: Deutz TCD3.6 – 74.4 kW (100 HP)
EU Stage IV / U.S. EPA Tier 4f



AP 240

Operating weight: 9560 kg (21,140 lb)
Maximum weight: 24 000 kg (52,910 lb)
Working width: 1986 mm (78.2 in)
Engine: Cummins QSB3.3-C99 – 74 kW (99 HP)
EU Stage IIIA / U.S. EPA Tier 3

ART 280

PRODUCTIVITY

Ballasting system

Offers a wide range of weights, from 9 to 28 tons

Air-on-run system

Central inflation-deflation system for easy control of tyre pressure

Front isostatic axle with oscillation

Higher stability and increased surface coverage and quality

ERGONOMICS

Operator workplace

Ergonomically friendly operator station designed for high operator comfort during working day

Multifunctional display

Innovative machine display in front of the operator for quick and easy machine control and information overview

Advanced travel joystick

Ergonomic travel joystick with centralised speed adjustment located directly on the travel lever for one-touch movement

SERVICEABILITY

Accessible engine compartment

Wide-opening rear hood and side covers make engine and its components easy to access

Easy-to-reach maintenance points

All service points are conveniently located for service

Solid design

Robust machine design to minimise downtime



APPLICATIONS

- Medium and large compaction jobsites
- Transportation-related construction – municipal and town roads, motorways, airfields
- Building construction – housing, commercial, industrial

ART 240 (AP 240)

PRODUCTIVITY

Ballasting system

Offers wide range of weight, from 9 to 24 tons

Air-on-run system

Central inflation system for easy control of tyre pressure

Front isostatic axle with oscillation

Higher stability and increased surface coverage and quality

ERGONOMICS

Simple & reliable dashboard

Intuitive machine control, even with an unskilled operator

Operator workplace

Ergonomically friendly operator station designed for high operator comfort during working day

Visibility

Excellent all-around machine visibility for safety on the jobsite

SERVICEABILITY

Tool-free daily inspection

Quick and easy daily inspection

Maintenance-friendly design

High focus on easy maintenance and robust design to minimise downtime

Draining points

Ground access to all main draining points

READY FOR ANY JOBSITE

No matter what challenges future jobsites may bring, Ammann Pneumatic Tyred Rollers are built to overcome them. Hydronamic and hydrostatic versions help the machines match the applications.



SPACIOUS CAB

Highly comfortable operator station with all controls easy to reach and with exceptional visibility from the cab.

VARIABLE OPERATING WEIGHT

Easy ballasting allows the machine to be adjusted to the ideal weight for the jobsite – from 9 tons to 24/28 tons.

AIR-ON-RUN

Adjust tyre pressure from the comfort of the cab.

EASY TO MAINTAIN

Fast maintenance due to accessible check points, filters and external drainage ports.

FRONT AXLE

Isostatic suspension with integrated oscillating movement offers permanent ground contact and high compaction quality.

3°

HIGH CUSTOMISATION

A wide range of options can boost productivity, gradeability, operator comfort and safety.



SPRINKLING SYSTEM

Large water tank capacity with 3-stage filtration system in combination with proportional water flow control allows extended working time without interruption for tank refilling.

TRACTION CONTROL

Increases machine traction on difficult jobsites and makes machine loading easier.

BUILT FOR VERSATILITY

DESIGNED FOR COMFORT AND PRODUCTIVITY

Ammann Pneumatic Tyred Rollers excel in multiple applications and on varied materials. Their kneading effect compacts stubborn materials and seals surfaces, too. Easy ballasting allows the machines to be adjusted to the ideal weight for particular jobsites, while tyre pressures can be adjusted from the comfort of the cab.

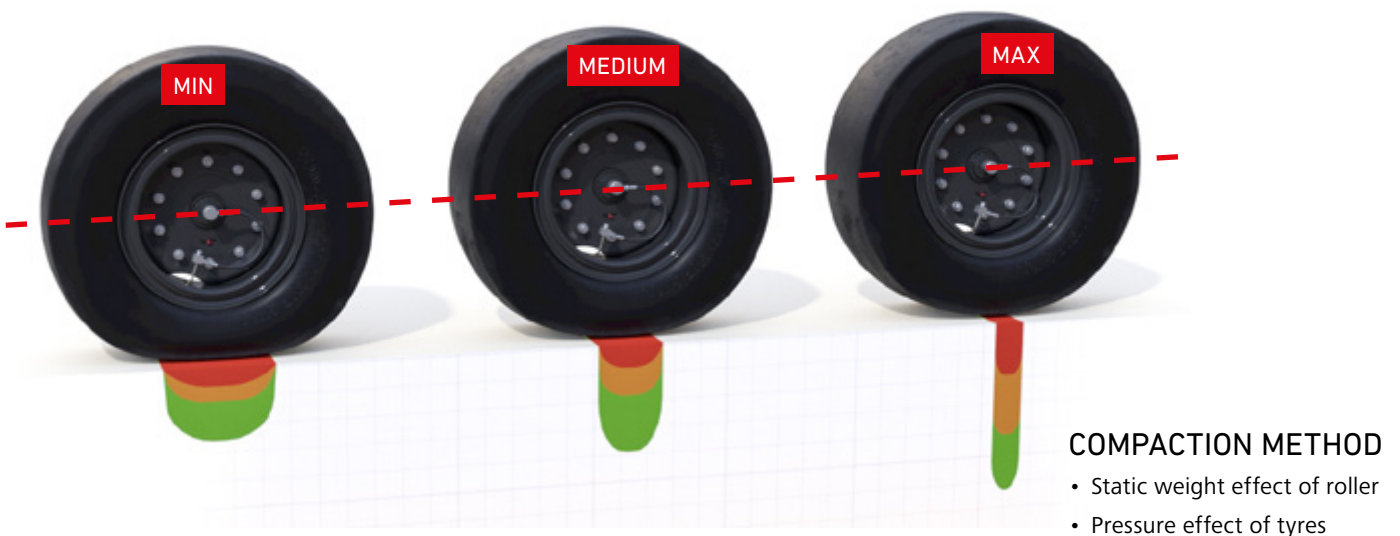
BALLASTING SYSTEM

ART 280

Weight can be quickly added or removed with the easy ballasting system. Weights from 9 tons to 28 tons can be utilised, helping the rollers excel on varied jobsites – and as rental machines. Weight can be adjusted in two ways: filling the frame with water or a material, or adding weight with blocks made of steel, concrete, sand or another substance.

ART 240 (AP 240)

Extended possibilities in terms of machine weight changes are one of the key features why is this machine so great. Easily openable machine frame enable quick change of operation weight to correct one. Additional weight is possible also install below the machine frame. Two different types of frames - standard or waterproof excels in a wide variability of used materials for weight changes. The standard frame is possible sill up with varied materials like sand, stones, metal plates, etc... A waterproof frame brings the possibility of quickly changing the machine weight via filling the frame with water.



Air-on-run system

All machines are equipped with a standard central inflation system where the operator can quickly change tyre pressures from the cab. Air pressure is distributed to all tyres simultaneously, which immediately impacts the ground contact pressure. No external inflation system is necessary.

Front isostatic axle with oscillation

The unique construction of the machine – specifically, the hydraulically suspended isostatic front axle – provides consistent pressure to the front tyres. The front axle provides stability on uneven terrain through an integrated oscillation function that absorbs bumps from uneven surfaces.



AIR-ON-RUN

“Tyre widths and arrangements combine with ballasting options to make these rollers stand out.”

SUB-BASES

Gravel mixtures:

Recommended maximum lift thickness of 280 mm (11 in)

Sub-base course:

Hydraulic, consolidated mixtures up to 150 mm (5.91 in)

Stabilized soils up to 180 mm (7 in)

Loam and clay soils up to 150 mm (5.9 in)

Mixed soils up to 240 mm (9.5 in)

Sand and gravel materials up to 280 mm (11 in)

Sub-grade: Not recommended

Product Application (recomm. 16–28 t)

- Recommended weight over 16 t
- Great compaction effect on stabilized soils
- Very good results on industrial mixtures
- One of the required rollers in cold recycling technology

TOP LAYERS

Wearing course:

15–60 mm (0.59–2.36 in)

Binder layer:

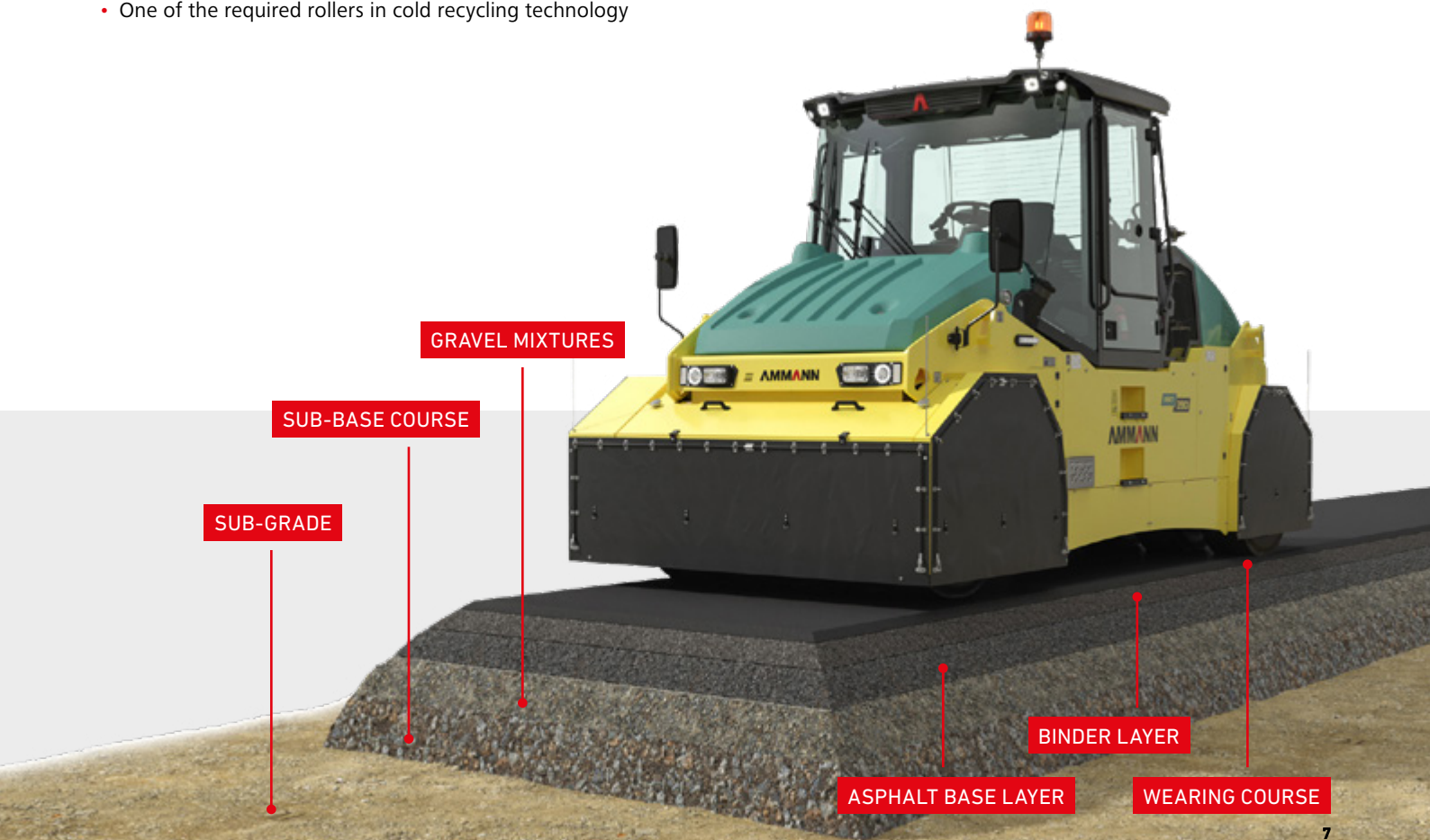
40–100 mm (1.57–3.94 in)

Asphalt base layer:

80–140 mm (3.15–5.5 in)

Product Application (recomm. 9–16 t)

- Recommended weight below 16 t
- Excellent for first passes – static pre-compaction
- Final passes on base and binder – sealing effect



OPERATOR COMFORT AND CONTROLS

ABUNDANT SPACE, EASY HANDLING

Operators appreciate comfort, but the business owner benefits, too. Comfort reduces fatigue and helps keep operators focused throughout their shifts. That leads to improved safety and productivity. Convenient controls help operators leverage all the compaction power built into the machine.

ART 280

Operator workplace

A highly sophisticated operator station showcases great attention to detail. Main control components are intuitively organised and conveniently located on right armrest. Other switches and controls are within easy reach. The operator seat features armrests and is effortless to adjust. A spacious platform gives operators the space they need.

Multifunctional display

An updated cab offers advances in machine control. An operator needs to monitor only the central machine display, integrated into the steering wheel. This enables a quick overview of key functions – including operational parameters, fluid levels, temperatures and oil pressure. The machine control concept is identical to all new Ammann rollers, helping operators switch seamlessly between models.

Advanced travel joystick

An ergonomic travel joystick with a logical layout and centralised main machine and safety functions, such as the panic stop system, is standard on all machines. Machine speed can be adjusted directly on the travel lever, enhancing safety by helping the operator focus on other aspects of the job.



ART 240 (AP 240)

Simple and reliable dashboard

All main controls are easy to reach and visible in this intuitive operator dashboard. A good layout is essential to helping operators track key functions. All indicators are centralised, with a control display monitoring main engine functions.

Operator workplace

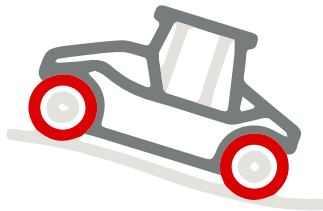
A highly sophisticated operator station showcases great attention to detail. Main control components are intuitively organised and conveniently located. A great and comfortable, adjustable operator seats with armrests and spacious platform is important for the operator to relax during a working day.



“Operators of all experience levels are productive because of the intuitive controls.”

Smart Machine Reset Traction

An intelligent control and monitoring system maximises the safety and effectiveness of the machine. The system automatically measures weight and determines the proper speed and brake settings that will deliver optimal productivity.



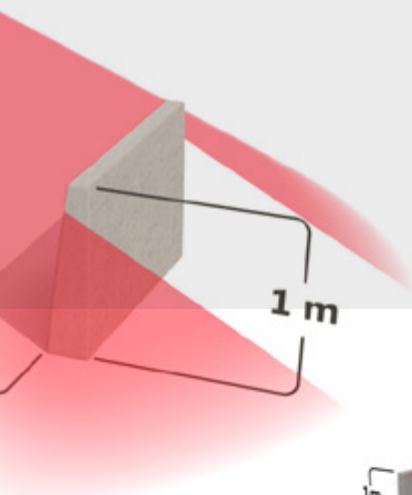
S.M.R.T.

SMART MACHINE RESET TRACTION SYSTEM

VISIBILITY

“PERFECT VISIBILITY”

Exceptional visibility from the operator station enhances jobsite safety and makes machine loading safer. All objects beyond a 1-meter-by-1-meter area (both in the front and back of the machine) are visible to the operator.



SERVICEABILITY

ART 280

Accessible engine compartment

Accessibility during service was a priority when designing the machine. Side covers provide exceptional access to the engine compartment, cooling system and all daily machine inspection points, including fluid levels. No tools are needed, reducing time spent on daily maintenance.

Easy-to-reach maintenance points

Centralised service points and external draining ports help technicians complete work quickly. The prime location of the service points also enables quick inspections and significantly helps to reduce the total ownership costs.

Solid design

Service time is reduced in several ways. A highly accessible engine compartment with a robust design protects all major components and prevents damage during machine operation. The ART rollers are equipped with external test ports for hydraulic components, enabling quick diagnosis when needed so that uptime is maximised.



ART 240 (AP 240)

Tool-free daily inspection

A wide-opening hood enables exceptional access to the engine compartment. Daily machine inspection points and fluid levels are easy to check. No additional tools are needed, reducing the time required for maintenance – and lowering the cost of ownership.

Maintenance-friendly design

Service time is reduced in several ways. It starts with a robust design that protects major components and prevents downtime. The compactor is accessible from all sides, making it easy for technicians to reach the required components and reducing machine downtime.

Draining ports

The rollers are equipped with external draining ports for quick changes of engine and hydraulic oil and coolant. These service points can be accessed from the ground, making the changes hassle-free – and quick.

ECODROP

“MAKE EVERY DROP COUNT!”



ECODROP

Lowers the cost of ownership and ecological impact through a reduction in the amount of fluids required, longer-lasting wear parts, extended service intervals and optimal access to all maintenance points.

BALLASTING SYSTEM

BALLASTING SPACE UP TO 3m³

Ballast can be added or removed to ensure the proper static weight. Space for ballast materials is built into the frame and beneath the machine, making the adjustment convenient and consistent. Ballast materials include concrete and steel.

ART 280 PNEUMATIC TYRED ROLLERS, 9–28 tons



INSIDE FRAME

Ballasting blocks: 0.7–10.4 tons

- Empty ballast blocks inside frame
- 0,7 ton / 2 x 0,35t / 2x 0,5m³
- Empty ballast blocks inside frame
- 1,4 ton / 4 x 0,35t / 4x 0,5m³
- Ballast blocks inside frame
- 2,35 ton / 2 x 1,17t
- Ballast blocks inside frame
- 4,7 ton / 4 x 1,17t
- Ballast blocks inside frame
- 5.2 ton / 2x 2,6t
- Ballast blocks inside frame
- 10.4 ton / 4x 2,6t

or Water ballast: up to 1.7m³

- Water ballast tanks inside frame
1,8 ton / 2 x 0,9t

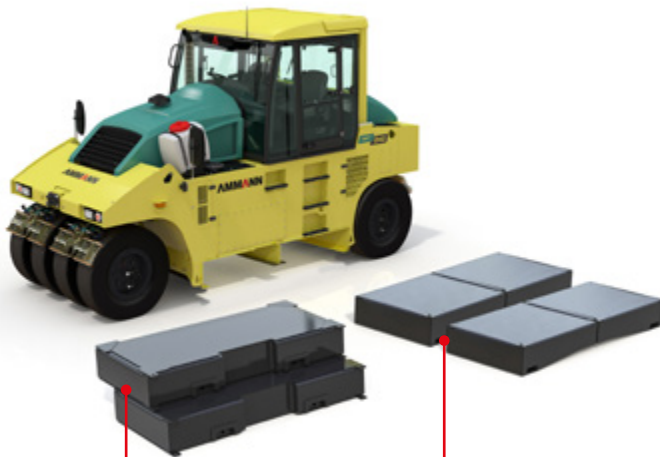
UNDER FRAME

Ballasting blocks: 0.8–7 tons

- Empty Ballast blocks under frame
- 0,8 ton / 4 x 0,2t / 4x 0,25m³
- Lower Ballast blocks under frame
- 3,2 ton / 4 x 0,8t
- Lower Ballast blocks under frame
- 7 ton / 4 x 1,75t



ART 240 (AP 240) PNEUMATIC TYRED ROLLERS, 9–24 tons



AP 240 BALLASTING BLOCKS
2.8–6 tons

ART 240 BALLASTING BLOCKS
2.8–6 tons

ART 240

4 Ballasting blocks:

- Empty ballast blocks
- 1 ton (2204 lb) / 1m³ (35.3 cu ft)
- Concrete ballast blocks
- 2.8 ton (6173 lb)
- Solid steel ballast blocks
- 6 ton (13,228 lb)

Additional ballasting space

- in frame 2.7 m³ (95,4 cu ft)

AP 240

2 Ballasting blocks:

- Concrete ballast blocks
- 2.8 ton (6173 lb)
- Solid steel ballast blocks
- 6 ton (13,228 lb)

Additional ballasting space

- in frame 3 m³ (106 cu ft)

ART 280

DESIGN

Comfort is built into the cab of Ammann Pneumatic Tyred Rollers to improve operator productivity and reduce fatigue. The spacious cab features an abundance of glass to optimise visibility to the front, sides and rear – and side windows open wide, too. Control switches are located on the right armrest for convenience, and a multifunctional display provides essential engine operating information. Sound levels are low.

CONTROLS

Controls are intuitively located, helping keep operators safe and productive. Tyre pressures can be adjusted from inside the cab through the Air-On-Run system. All service points can be accessed from the platform. Filling and draining ports for service fluids are centralised for fast exchange. The engine and cooler compartment is accessible under the bonnet.

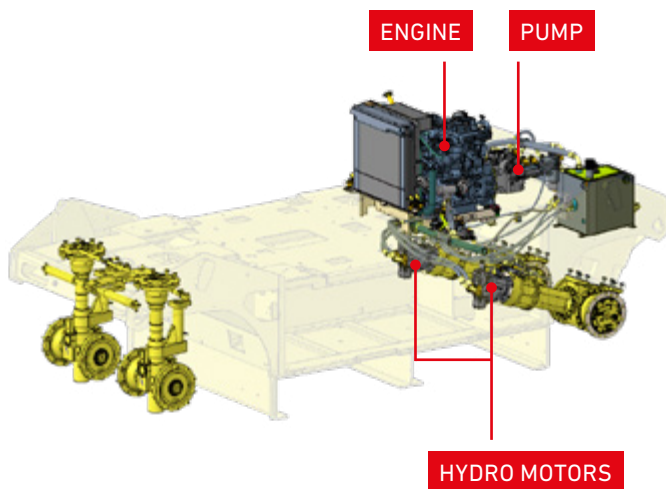


HIGHLIGHTS

- Front isostatic axle with oscillation
- Fully hydrostatic roller
- Wide ballasting space to change the weight from 9 to 28tons
- Central inflation system controlled from cab
- Cab isolated from heat and vibration
- Control switches placed on right armrest
- Ergonomic workplace with rotating and sliding seat
- Multifunctional display in steering wheel
- On-board diagnostics system
- 3-stage filtration circuit with proportional water flow regulation
- Large water tank capacity (400 liters / 105,7 gal)
- Toolless daily maintenance
- External draining points
- Engine Deutz Stage IIIIA / Tier 4 Final (EGR)
- Engine Deutz Stage IV / Tier 4 Final (EGR+DOC+SCR)



PROPULSION



HYDROSTATIC VERSION

Hydrostatic propulsion systems are the best fit on jobsites where extra traction and propulsion are required. These rollers use pump and hydro-motors that control propulsion energy. Traction force can be adjusted electronically, which leads to fuel efficiency. The hydrostatic models enable particularly smooth starts and stops.

VERSATILE APPLICATIONS

A rotating and sliding seat helps the operator achieve optimal views to all sides. Controls and switches are located on the armrest. The machine is controlled via a multifunctional display which is in front of the operator and is easily reached no matter where the seat is positioned. The steering column tilts and is easily adjusted.

HYDROSTATIC ROLLER "EASY HANDLING"

The variable weight ballasting concept and easy air-pressure adjustment make the ART 280 a great fit on many jobsites – including thin asphalt layers, concrete mixtures, compact soils or sand layers. The machine excels on a wide range of materials and layers.

ART 240 (AP 240)



FRONT AXLE ISOSTASY AND OSCILLATION

The rigid-framed roller features 4 smooth tyres on each axle. The front, steerable oscillating axle features 2 pairs of wheels that provide the desired kneading effect. The front axle also is isostatic, absorbing bumps and obstacles to enable compaction of uneven surfaces. The rear axle drives the machine. All tyres are strategically arranged to provide thorough coverage.

WIDE RANGE OF OPTIONS AND BALLASTINGS

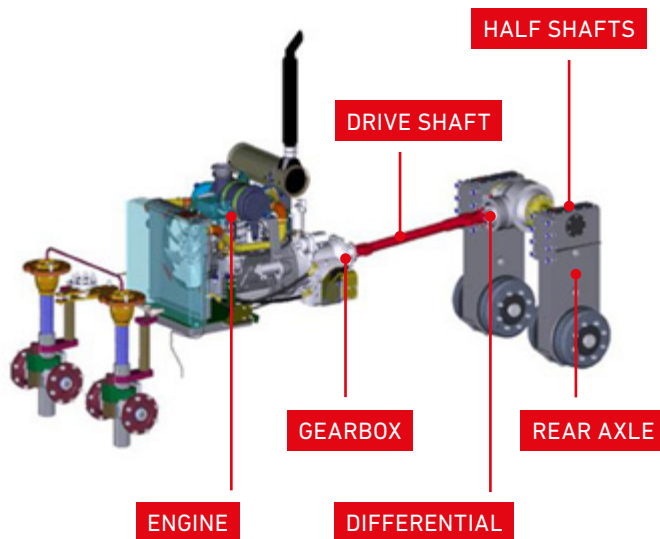
Widely variable ballasting, and other options, are essential to maximising productivity and ensuring the roller meets the customer's specific needs. Rollers can be equipped with a water-proof frame that enables quick weight adjustments without any special tools. Easy-to-add thermal aprons transform a machine from a soil roller to an asphalt compactor.

HIGHLIGHTS

- Front isostatic axle with oscillation
- Hydrodynamic drive mechanism
- Wide ballasting space to change the weight from 9 to 24 tons
- Cab isolated from heat and vibration
- Central inflation system controlled from cab
- Two independent operating stations with intuitive dashboard
- Great visibility
- 3-stage filtration circuit with proportional water flow regulation
- Large water tank capacity
 - AP 240, 460 liters / 121,5 gal
 - ART 240, 390 liters / 103 gal
- Highly accessible service points
- External draining ports
- Engine Cummins Stage IIIA / Tier 3
- Engine Deutz Stage IV / Tier 4 Final (EGR+DOC+SCR)



PROPULSION



HYDRODYNAMIC VERSION

Many Ammann rollers feature hydrodynamic propulsion, a method that creates drive energy mechanically. These systems feature uncomplicated mechanics, are easy to maintain and feature long component life.



VERSATILE APPLICATIONS

Hydrodynamic Ammann Pneumatic Tyred Rollers feature 2 identical working stations. Operators simply move to the seat that maximises their visibility. Dashboard controls are easy to access from either seat. A power shift gearbox with easy control enables smooth transitions. Acceleration or deceleration is accomplished through customer-friendly pedals similar to those used on passenger vehicles.

HYDRODYNAMIC ROLLER

“DO YOU NEED TO COMPACT THIN ASPHALT LAYERS, CONCRETE MIXTURES – OR COMPACT SOIL AND SAND LAYERS?”

That's no problem with the ART 240. Its variable weight ballasting concept and tyre pressure adjustment make the machine capable of compacting a wide range of materials and layers. It excels wherever you use it!



THERMAL APRONS

These options are easily added when working with asphalt. The thermal makeup of the aprons provides substantial heat retention and helps the tyred rollers eliminate asphalt pickup and provide the desired sealing effect when working in paving applications.



EDGE CUTTER

Adding an edge cutter to the roller when working in asphalt applications can eliminate the need for an additional machine to enter the compaction process.

OPTIONS				
	ART 280 StIV / T4f	ART 280 StIII / T3	ART 240 StIV / T4f	AP 240 StIII / T3
Ammann Traction Control	✓	✓	Standard	Standard
CE CONFORMITY	Standard	Standard	✓	✓
A/C	✓	✓	✓	✓
A/C without Cooling Medium	✓	✓	N/A	N/A
Additional Documentation Printed	✓	✓	✓	✓
Additional Storage Rack Cab Version	✓	✓	N/A	N/A
Additional Lights 360° LED	✓	✓	N/A	N/A
Back-up Alarm	✓	✓	✓	✓
Back-up Alarm Adaptive	✓	✓	N/A	N/A
Back-up Light	N/A	N/A	✓	N/A
Ballast Blocks Inside 2x1.17t	✓	✓	N/A	N/A
Ballast Blocks Inside 2x2.6t	✓	✓	N/A	N/A
Ballast Blocks Inside 4x1.17t	✓	✓	N/A	N/A
Ballast Blocks Inside 4x2.6t	✓	✓	N/A	N/A
Ballast Blocks Under 4x0.8t	✓	✓	N/A	N/A
Ballast Blocks Under 4x1.75t	✓	✓	N/A	N/A
Ballast Blocks Under 4x0.75t	N/A	N/A	✓	N/A
Ballast Blocks Under 4x1.5t	N/A	N/A	✓	N/A
Ballast Blocks Under 4x2.0t	✓	✓	N/A	N/A
Ballast Blocks Under 2x1.4t	N/A	N/A	N/A	✓
Ballast Empty Boxes under 4x0.2t	✓	✓	✓	N/A
Ballast Empty Boxes Inside 2x0.35t	✓	✓	N/A	N/A
Ballast Empty Boxes Inside 4x0.35t	✓	✓	N/A	N/A
Ballast Water Tanks Inside 2x0.9t	✓	✓	N/A	N/A
Ballast Blocks Under 2x3.0t	N/A	N/A	N/A	✓
Ballast Inside Frame 1.0t	N/A	N/A	✓	✓
Ballast Inside Frame 2.0t	N/A	N/A	✓	✓
Ballast Inside Frame 4.0t	N/A	N/A	✓	✓
Ballast Inside Frame 8.0t	N/A	N/A	✓	✓
Cab with ROPS/FOPS	✓	✓	N/A	N/A
Canvas canopy ROPS mounted	N/A	N/A	✓	✓
Canvas canopy Selfstanding	N/A	N/A	✓	✓
Certificate of Origin	✓	✓	✓	✓
Color Scheme Customer	✓	✓	✓	✓
Container Shipment Preparation	✓	✓	N/A	N/A
Edge cutter (no Pressing wheel)	✓	✓	✓	✓
Emulsion Sprinkling System 50L	✓	✓	✓	✓
Engine Air Inlet Pre-Cleaner	✓	✓	✓	✓
Fire Extinguisher	✓	✓	✓	✓
FOPS Cab	N/A	N/A	✓	✓
FOPS / ROPS Mounted	N/A	N/A	✓	✓
Frame ROPS	N/A	N/A	✓	✓
Frame Waterproof	N/A	N/A	✓	✓
GPS Q-Compaction	✓	✓	N/A	N/A
GPS Q-Compaction Preparation	✓	✓	N/A	N/A
Greasing Tool and Wheel spanner	✓	✓	✓	✓
Chock Blocks	✓	✓	✓	✓
Infrared Thermometer	✓	✓	N/A	N/A

	ART 280 StIV / T4f	ART 280 StIII A / T3	ART 240 StIV / T4f	AP 240 StIII A / T3
Maintenance Kit 250h	N/A	N/A	N/A	✓
Maintenance Kit 500h	✓	✓	✓	✓
Maintenance Kit 1000h	N/A	N/A	✓	✓
Maintenance Kit 2000h	N/A	N/A	✓	✓
Plug 12V	✓	✓	N/A	N/A
Radio FM	✓	✓	✓	✓
Radio Preparation	N/A	N/A	✓	✓
Rear view Camera	✓	✓	N/A	N/A
Registration Plate Holder	✓	✓	N/A	N/A
Safety Cover Fan	✓	✓	N/A	✓
Scrapers Brushes Tilttable	N/A	N/A	✓	✓
Scrapers Cocoa Tilttable	✓	✓	✓	✓
Scrapers Standard Dunlop	N/A	N/A	✓	N/A
Scrapers Standard Michelin	N/A	N/A	✓	N/A
Seat Belt 3"	N/A	N/A	N/A	✓
Slow Moving Vehicle Triangle	✓	✓	N/A	✓
Spare Wheel Dunlop	✓	✓	✓	✓
Spare Wheel Michelin	✓	✓	✓	✓
Spare Wheel Mitas Diagonal	✓	✓	✓	✓
Spare Wheel Mitas Radial	✓	✓	✓	✓
Sun Films on Cab Glasses	✓	✓	✓	✓
Telematics Preparation	✓	✓	✓	✓
Telematics Trackunit	✓	✓	N/A	N/A
Thermal Aprons	✓	✓	✓	✓
Toolset	✓	✓	✓	✓
Towing Hinge Front	N/A	N/A	✓	✓
Towing Hinge Rear	✓	✓	N/A	N/A
Tyres Dunlop	✓	✓	✓	✓
Tyres Michelin	✓	✓	✓	✓
Tyres Mitas Radial	✓	✓	✓	✓
Warning Beacon LED	✓	✓	N/A	N/A
Warning Beacon for Platform	N/A	N/A	✓	✓
Warning Beacon for Cab	N/A	N/A	✓	✓
Warning Beacon for ROPS	N/A	N/A	✓	✓
Water Tank Filling from Ground	✓	✓	N/A	N/A
Working Lights Cab LED	N/A	N/A	N/A	N/A

✓ = Option
N/A = Not Available

OPTIONS
"CUSTOMISE YOUR ROLLER!"



SERVICE

A NETWORK TO SUPPORT YOU

No matter where you are, Ammann-trained technicians and parts are nearby. Ammann dealers provide well-trained service technicians who can help you, whether it's an emergency or time for preventive maintenance. The vast Ammann network ensures there is a nearby technician who understands your language and your technical needs. Parts availability and ease of ordering are always Ammann priorities.

HOTLINE SUPPORT

Ammann experts are ready to answer your technical questions 24 hours a day, seven days a week. The hotline team is highly trained and experienced. Representatives can talk you through the challenges – in various languages – to help keep your machine productive.

SERVICE APP

The service app for Ammann machines impresses machine operators who are already benefiting from the advantages of the free application. The easy-to-use app provides machine operators working on site quick and uncomplicated access to machine documentation.

SERVICE VIDEOS

Sometimes a video tells the story best. That's why you'll find a variety of service videos that walk you through service and maintenance processes.

QR CODE

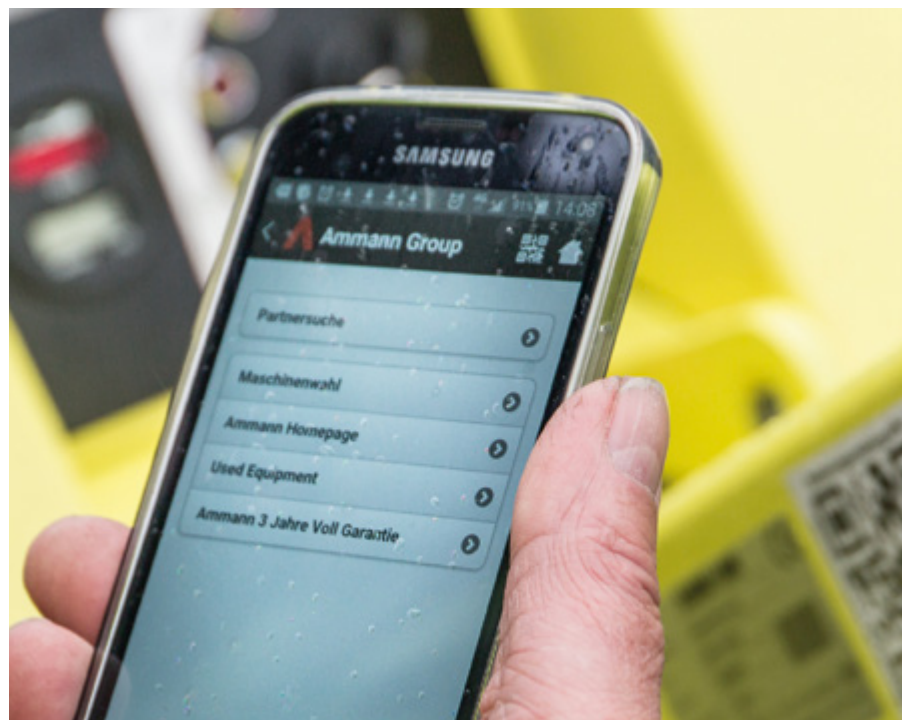
Many maintenance kits feature QR codes that link to videos with helpful demonstrations that walk you or your technician through the process. The videos tell the story without dialogue so customers anywhere in the world can understand.



APPLE STORE



ANDROID STORE



TRAINING

ENHANCE YOUR PERFORMANCE

If Ammann machine training was summarised in a single word, it might well be “comprehensive.” The training includes multiple expertise levels and modules to benefit all skill levels.

TRAINING WORLDWIDE

Ammann product and application experts are ready to provide the training you need, no matter where you are. The global nature of Ammann ensures an expert is always near you – ready to offer instruction that ranges from the basics to the specifics relevant to your geographic area. The training can take place at an Ammann facility, your business – or even on a jobsite.

KEY TEACHING THEMES CONNECT ALL EFFORTS, NO MATTER WHERE THEY OCCUR

A good balance. Training often combines a traditional classroom setting with hands-on machine experience. Ammann application experts also can offer instruction on your jobsite.

Training typically includes students from other industry businesses. Participants say conversations with their peers – and learning how they overcome challenges – are other key benefits.

Learn in your language. Lessons are taught in many languages, ensuring your team understands key terms and lessons and makes the most of your training investment.





SPARE PARTS

You can only earn money when your equipment is working. That's why Ammann does everything possible to ensure you have the parts where and when you need them. Those efforts include easy online ordering to avoid confusion and enable tracking, and efficient logistics and availability to help parts reach you quickly.



WEARING KITS

Some machines handle abrasive materials in demanding applications. While wear is inevitable, downtime can be limited. Wearing kits make replacement of these parts efficient and cost-effective. All the necessary parts – big and small – are in a single box to keep you organised and efficient and to ensure the machines are quickly back up and running.

EMERGENCY KITS

Emergency kits prevent little frustrations from becoming bigger issues that can shut down a machine and even a jobsite. These kits include parts such as switches, fuses and valve coils that are simple and fast to change yet still can cause significant problems if not operating properly. The kits easily fit in the trunk or bed of a vehicle so they're on hand when needed. A crew-member with a bit of technical knowledge can handle this work on the jobsite. These repairs take 2 hours or less.

MAINTENANCE KITS

Preventive maintenance is crucial to efficient operation and service life of machines. The easier the maintenance, the more likely it is to be completed. Maintenance kits make the upkeep simple. Parts associated with a particular maintenance process are in a single box with a single part number.

BROCHURE WITH ALL KITS

We have a prospect with all kits, and their part numbers are available for you. Just contact your parts consultant and have a digital or hardcopy sent to you.



For additional product information
and services please visit:
www.ammann.com

